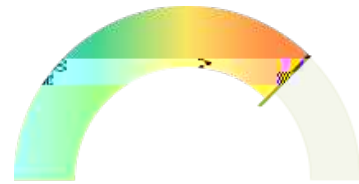


Alumni Outcomes

What is Emsi Data?

Match Summary



Earnings

Based on their occupations and where they live, these are estimates of what your alumni could be making at their current ages, and a potential wage based on the average wage for t

Program to Career Outcomes

The following tables display the employment outcomes of your alumni based on their current role. These outcomes are classified by standardized occupation codes and job titles.

Librarians and Media Collections Specialists (25-4022)	610	6.83%
Chief Executives (11-1011)	367	4.11%
Unclassified Occupations (99-9999)	360	4.03%
Postsecondary Teachers (25-1099)	306	3.43%
Personal Service Managers, All Other; Entertainment and Recreation Managers, Except Gambling; and Managers, All Other (11-9198)	291	3.26%
First-Line Supervisors of Office and Administrative Support Workers (43-1011)	244	2.73%
Financial Managers (11-3031)	241	2.70%
Social and Human Service Assistants (21-1093)	226	2.53%
Marketing Managers (11-2021)	212	2.37%
General and Operations Managers (11-1021)	204	2.28%

Top Companies

This table shows the top companies where your alumni work based on their most current job.

Company	Alumni Profiles	Percent
Chicago Public Schools	122	1.37%
Dominican University	75	0.84%
Chicago Public Library	59	0.66%
JPMorgan Chase & Co.	28	0.31%
University of Illinois At Chicago	28	0.31%
Oak Park Public Library	24	0.27%
Rush University Medical Center	23	0.26%
AMITA Health	23	0.26%
Walgreens Company	22	0.25%
Allstate Corpora; on	22	0.25%

Top Skills

This diagram shows the top skills your alumni have included in their online profiles.

'Customer Service' is the most frequently stated skill, associated with 37% of alumni. This skill is often paired with 'Microsoft Office', 'Management', and 'Leadership'.

State	Alumni Profiles	Percent
Illinois	6,774	75.83%
California	245	2.74%
Minnesota	217	2.43%
Texas	146	1.63%
New York	125	1.40%
Wisconsin	121	1.35%
Florida	113	1.26%
Michigan	100	1.12%
Ohio	89	1.00%
Colorado	87	0.97%

FAQ

How does Alumni Outcomes work?

How does Emsi construct a "profile"?

We consolidate billions of raw social profiles and data points from across the web. This brings back millions of duplicate profiles which we then match and unify to create one unique master profile; this profile corresponds to one real person. We attempt to match profiles based on known fields like email address, location, name, job title, etc. Finally, we export the final profile dataset and make it available to various customer facing applications.

What does Emsi count as a matched record?

Emsi matched your institution's past student information to a database containing public profiles. To count as a matched record, a profile had to match your institution's past student information on name and at least one of the following: contact information or award information (such as graduation year, program name, etc.).

What is the Highest Award setting?

When selected, the Highest Award checkbox will limit report results to one award per student. This enables school wide analysis by headcount and is selected by default only in the School Summary report. Deselect the checkbox to analyze all members of a group if it may include students who earned other awards at your institution.

What is the Job Started After Grad Year setting?

When selected, the Job Started After Grad Year checkbox will limit report results to profiles whose most recent job started after the year of graduation. This enables analysis of employment outcomes for selected groupings and is selected by default for both the School Summary and Program Snapshot reports. Deselect the checkbox to include profiles whose most recent job started on or before the year of graduation or did not include a job start year.

Where can I find the percentage of my graduates that Emsi matched?

A complete overview of match statistics can be found in your institution's summary Excel file.

How does Emsi determine if alumni are working in their field of study?

Emsi compares the SOC code of a profile's most recent job to our custom CIP-SOC mapping to determine whether the job is in or out of the field of study indicated by the CIP code your institution provided. The mapping is based on the NCES CIP-SOC crosswalk and the experience of Emsi's Professional Services team. In cases where no determination is possible, web reports indicate "out of field."

What is my region?

The list of counties or states that defines your service region (as specified by your institution) can be found in the region tab of the Outcomes or Analysis Excel files. Emsi uses this list to determine if a matched profile currently resides in or out of your region.

*Note: Filtering the report by geographies outside of this service region will always result in 0 alumni in region.

How does Emsi estimate wages?

All wage metrics are an average for the group of your selected alumni. Potential Wage is based on the average wage for their occupation in their county. Estimated wage is based on the median wage for their occupation in their county, and adjusted for age and degree level. All wage data is built from OES and adjusted by QCEW, ACS and other sources.

How do I cite Emsi data?

Any time you include Emsi data in a webpage, report, or other media, you must abide by the following citation guidelines.

1. If you use Emsi data along with other data sources, you must include either a footnote or an in-text citation for each instance Emsi data is used, along with the year the data was published by Emsi. E.g. "Earnings for Idaho earners in the 75th percentile of earners is \$57.18/hr." (Emsi, 2019)."
2. If you include only Emsi data, with no other contributing data sources, you may choose to either cite each instance of Emsi data used, or you may include a general citation at the beginning or end of your webpage, report, etc. If you choose to include only a general citation, the citation must be prominently displayed.
3. In addition to the above requirements, whenever you cite Emsi data, you must display prominently on the webpage, report, etc. Emsi's website URL as follows: "Emsi – economicmodeling.com". For instance, at the bottom of a webpage containing Emsi data, you could include the following citation: "Source: Emsi- economicmodeling.com".